

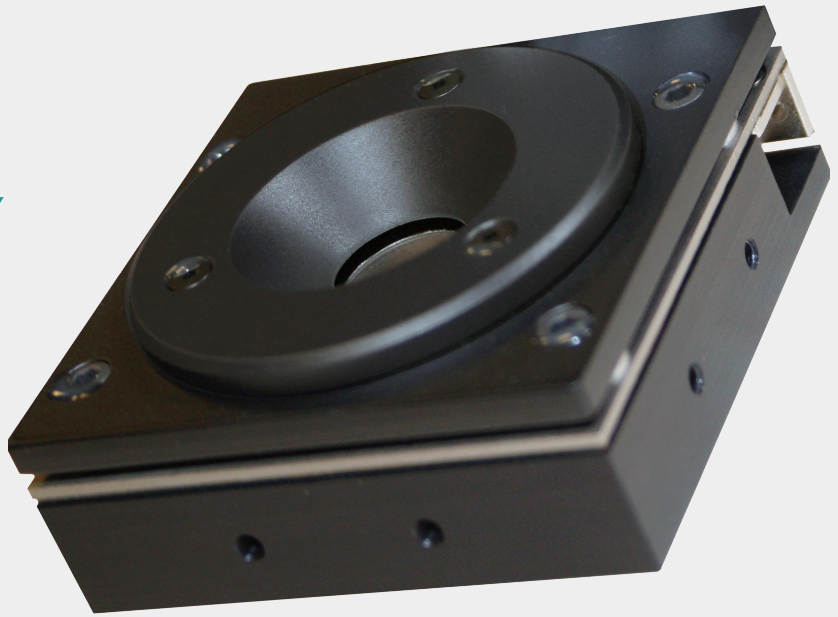
mirao™ 52-e

wil

**ELECTROMAGNETIC
DEFORMABLE MIRROR**

**UNIQUE WAVEFRONT
SHAPING TECHNOLOGY**

**GREAT LONG
TERM STABILITY**



Mirao 52-e offers unprecedented wavefront correction abilities and features, especially suited to microscopy applications.

WHY TO BUY

- $\pm 50 \mu\text{m}$ stroke (tilt PV)
- 15mm pupil with 52 actuators
- Exceptional surface quality (10 nm rms)
- Surprising precision (20 nm rms)
- Virtually no hysteresis (<2%)
- Near perfect linearity (>95%)
- USB 2.0 connectivity

mirao™ 52-e : IS A UNIQUE WAVEFRONT SHAPING TECHNOLOGY

Mirao 52 combines unparalleled stroke and precision with low power consumption and USB 2.0 connectivity to meet the needs of today's most demanding applications.

Mirao is a unique technology that uses electromagnetic energy to deform the mirror's surface up to $\pm 50 \mu\text{m}$ (tilt PV). It outperforms other commercially available mirrors, especially in microscopy, where severe aberrations need to be corrected. Mirao can correct up to the 6th Zernike order with extreme precision.

Number of actuators	52
Maximum generated wavefront (PV)	$\pm 50 \mu\text{m}$
Surface quality (rms active flat)	10 nm
Integrated tip/tilt correction	Yes
Spatial frequency correction	Zernike orders up to 6
Effective diameter	15 mm
Linearity	> 95%
Hysteresis	< 2%
Actuator input voltage	$\pm 1\text{V}$ maximum*
Coatings	Protected Silver
Power consumption	50W max
Dimensions / weight	64 x 64 x 23 mm / 490g**
Connectivity	USB 2.0
Operating System	Win XP, Win 7 (x32 / x64 Evaluation)

* Total sum of applied voltages not to exceed
** Mirror unit only

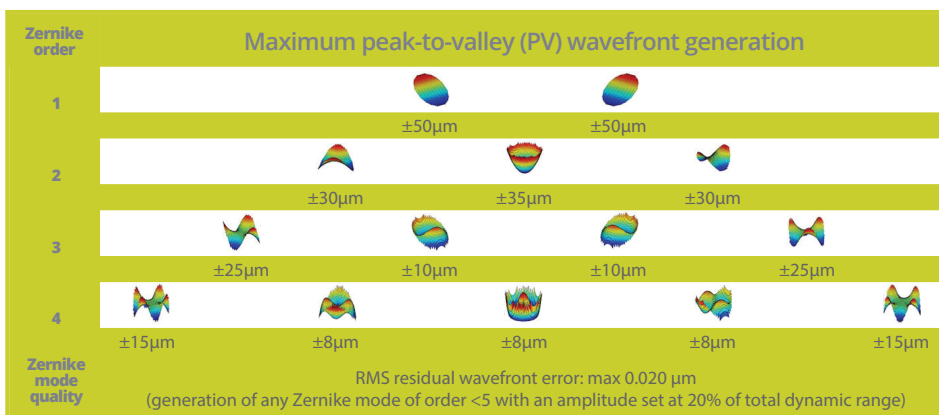
In addition to its excellent optical quality, high linearity and lack of hysteresis, the fact that mirao functions with almost any beam wavelength and intensity makes it ideal for a wide range of applications.

Mirao 52-e's new, ultra-compact electronic unit connects to your PC via a stand USB 2.0 port, and offers improved temporal performance and stability.

What's more, we have added a trigger output to facilitate synchronisation with other devices via a TTL signal.

The other major enhancement to the mirao 52-e is the all-new Application Programming Interface (API) that was painstakingly developed to provide easy access to mirao's powerful wavefront correction capabilities.

The API includes a complete, timesaving collection of high-level functions so that users can quickly develop feature-rich applications without having to rewrite driver libraries on their own. Thanks to its strict compliance to the ANSI C standards, the API library can be used in a large number of development environments.



To speak with a sales engineer, learn more or find a distributor in your region, please visit www.imagine-optic.com/find

www.imagine-optic.com